



# Redistricting 2021/2022 Third Public Hearing



# 2021/2022 City of Santee Redistricting

The 2021/2022 redistricting process:

- Project Overview
- Review Draft Maps
- Next steps and hearings



# City of Santee

Council Members hold 4-year terms

Transitioned to districts in 2018

- Districts 1 & 2 terms begin following election in November 2022
- Districts 3 & 4 terms begin following election in November 2024



# Redistricting Process

Step	Description
Initial Pre-Draft Hearings (2)	Held prior to release of draft maps. Education and to solicit input from the community Identify “neighborhoods,” “communities of interest,” and “secondary areas.”
Initial deadline for draft maps	Deadline for the public to submit draft maps for inclusion in the next hearing packet and presentation
Release draft maps	Draft maps posted to project website
Public Hearings (post-map) (2)	Public Hearings to discuss and revise or adopt the draft map(s)
Map adoption	Map adopted via ordinance or resolution. Final map must be posted at least 7 days prior to adoption. May happen at Hearing 4.



# Redistricting Rules and Goals

## Federal Law

Equal Population  
Federal Voting Rights Act  
No Racial Gerrymandering



## California Criteria for Cities

Geographically contiguous  
Geographic integrity of a local neighborhood, communities of interest  
Easily identifiable and understandable – use of local landmarks/boundary lines  
Geographically compact

## Other traditional principles

Minimize voters shifted to different election years  
Respect voters' choices / continuity in office  
Future population growth  
Preserving the core of existing districts



# Preeminent Considerations

- Equal population (one person/one vote)
- Racial minority voice
- Geographically contiguous districts
- Measured objectively



# Important Considerations

## "Communities of Interest"

- Physical boundaries
  - Natural or artificial barriers
  - Roadways, rivers, railways
  - Parks, schools, and other landmarks
- Geographic integrity, compactness



# Important Considerations

## "Communities of Interest"

- Political boundaries
  - School attendance areas
  - Special district service areas
  - Federal, state, and county divisions





# Important Considerations

## "Communities of Interest"

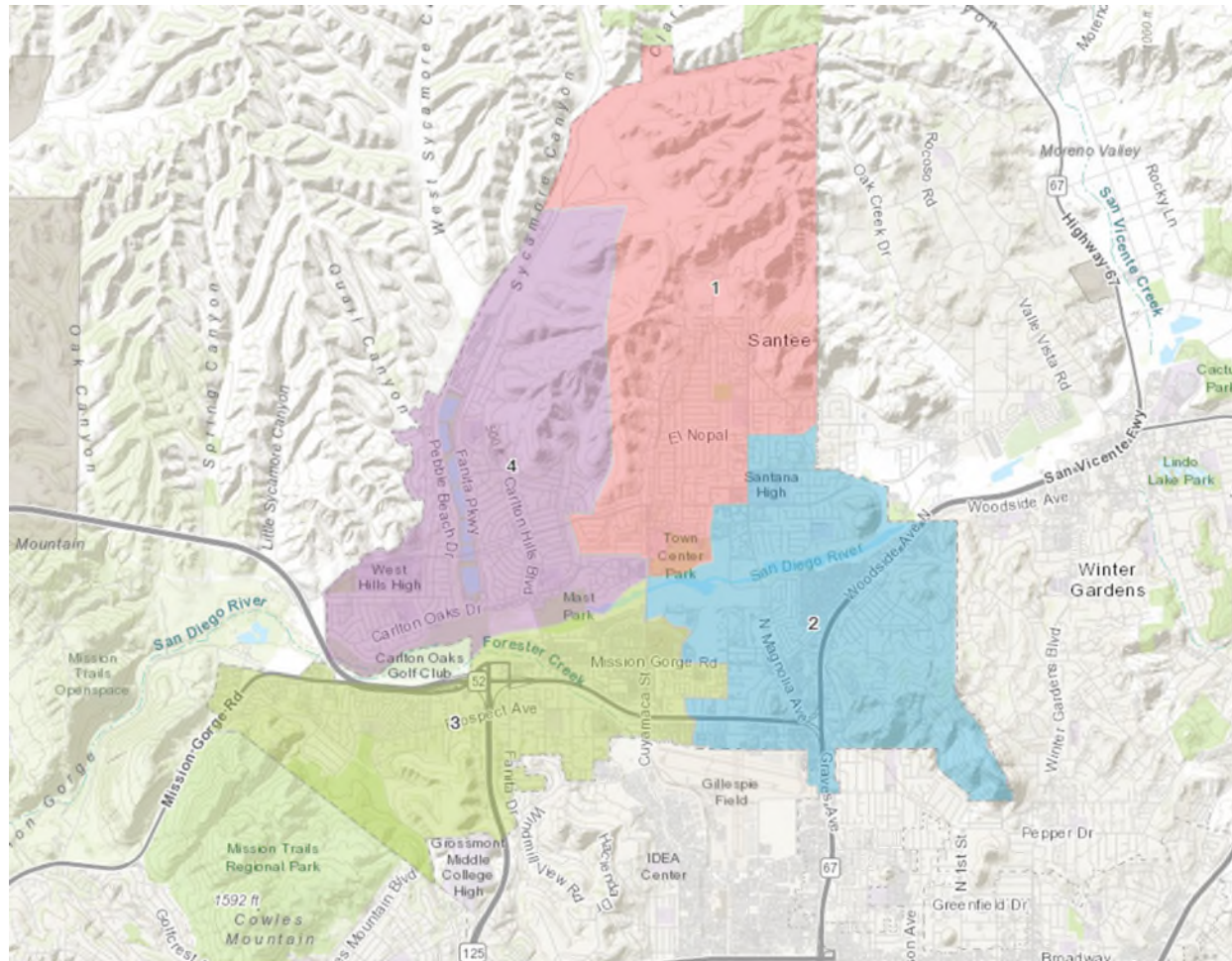
- Not:
  - Incumbents' residences
  - Political affiliations



[www.bbklaw.com](http://www.bbklaw.com)

© 2021 BEST BEST & KRIEGER LLP

# Existing Districts – Map Option A



Housing Stats



[www.bbklaw.com](http://www.bbklaw.com)

© 2021 BEST BEST & KRIEGER LLP

# Existing Districts with 2020 Census Data Overlay

District	Total_Population	Raw Deviation	% deviation	Latino	CVAP19 Total	CVAP19 NL White	CVAP19 NL Black	CVAP Hispanic	CVAP19 Not Hispanic	CVAP19 NL AIAN	CVAP19 NL ASIAN	CVAP19 NL Hawaiian	CVAP19 NL Other
1	14,520	-520.5	-3.46%	2,701	10,273	7,660	311	1431	8,890	31	430	44	127
2	15,650	609.5	4.05%	3,748	12,346	8,781	440	1792	10,519	122	822	49	75
3	15,363	322.5	2.14%	3,392	10,952	7,913	207	1741	9,207	105	569	28	60
4	14,629	-411.5	-2.74%	2,706	10,455	7,842	109	1420	9,015	37	587	3	100

Total Population: 60,162  
 Ideal Population: 15,040.5  
 Total Deviation: 7.51%

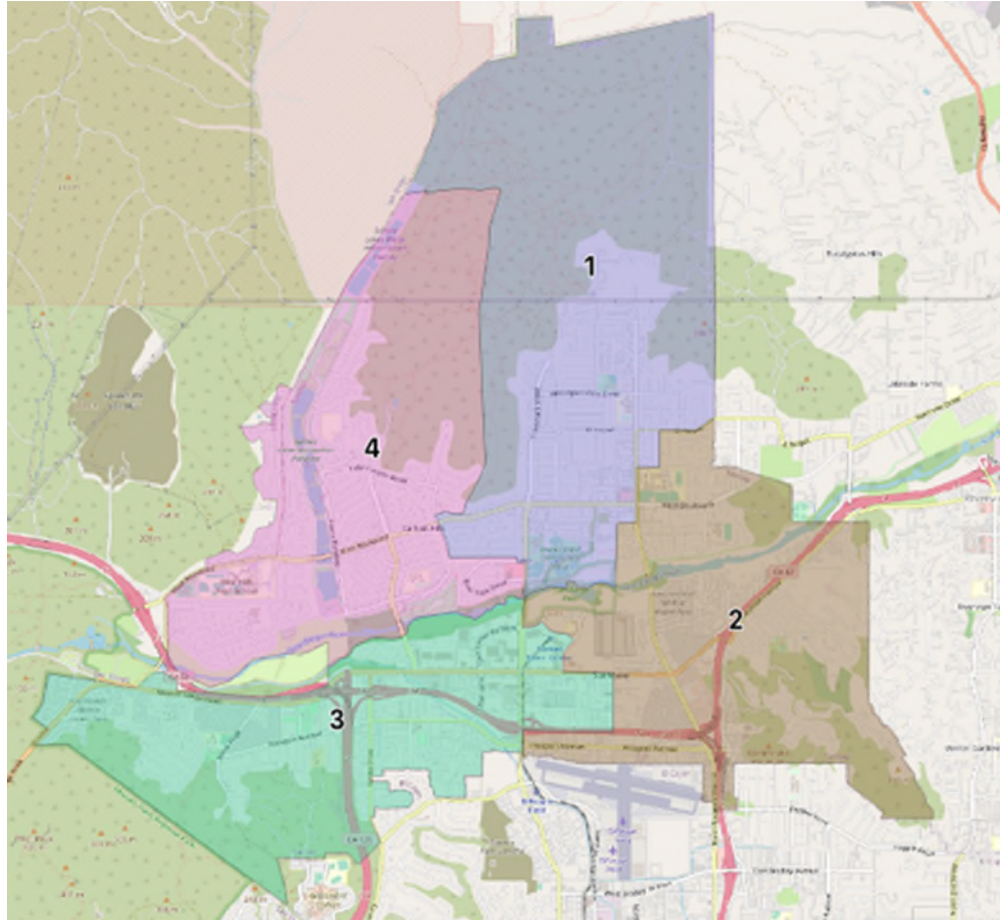


# Findings

- Total Deviation is within the “acceptable” range at 7.59%
- Creating a majority/minority district *may not* be possible, given the number of minority residents/voters and the dispersed nature of their residences.
- Current district boundaries may be adjusted for population balance, or re-adopted as is



# Map Option B



Housing Stats

**BB&K**

[www.bbklaw.com](http://www.bbklaw.com)

© 2021 BEST BEST & KRIEGER **LLP**

# Map Option B - Demographics

District	Total_Population	Raw Deviation	% deviation	Latino	CVAP19 Total	CVAP19 NL White	CVAP19 NL Black	CVAP Hispanic	CVAP19 Not Hispanic	CVAP19 NL AIAN	CVAP19 NL ASIAN	CVAP19 NL Hawaiian	CVAP19 NL Other
1	15,006	(35)	-0.23%	2,754	10,692	8,006	313	1,458	9,296	35	450	44	127
2	15,167	127	0.84%	3,786	11,925	8,387	440	1,817	10,050	126	802	49	66
3	15,360	320	2.12%	3,301	10,954	7,961	205	1,689	9,270	97	569	28	69
4	14,629	(412)	-2.74%	2,706	10,455	7,842	109	1,420	9,015	37	587	3	100

Total Population: 60,162

Ideal Population: 15,040.5

Total Deviation: 4.86%



# Findings – Option B

- Total Deviation is below the “acceptable” range at 4.86%
- Does not create a majority/minority district
- Resembles the current boundary map, particularly with regard to the shape of the districts and the “four corners” area in the center of town
- Creates compact voting districts



# Public Hearing & Discussion

- Review draft maps
- Hear public input
- May select a preferred map
- May request revisions





# Public Hearing & Discussion

Following tonight's hearing, BB&K will create revised map(s), if requested, for consideration at the 4th Public Hearing.

If the Council selects a preferred map, staff will bring an Ordinance approving the final map at the 4<sup>th</sup> Public Hearing



# Timeline & Next Steps

- One additional public hearing must be held before the Council may vote on a proposed final boundary map.
- Map may be approved at final public hearing
- The approved map must be submitted to the County Registrar of Voters no later than April 17, 2022.



# Timeline & Next Steps

October 13, 2021	1 <sup>st</sup> public hearing Held prior to the release of draft maps
November 10, 2021	2 <sup>nd</sup> public hearing Held prior to the release of draft maps
Fall/Winter 2021/22	BB&K to prepare draft maps using 2020 census data
January 26, 2022	3 <sup>rd</sup> public hearing Consideration and input on proposed draft maps
February 23, 2022	4 <sup>th</sup> public hearing Council to introduce ordinance approving final maps.
April 17, 2022	City deadline to adopt ordinance after 2 <sup>nd</sup> reading (effective immediately) and to <b>submit map to Registrar.</b>
November 2022	2022 election

