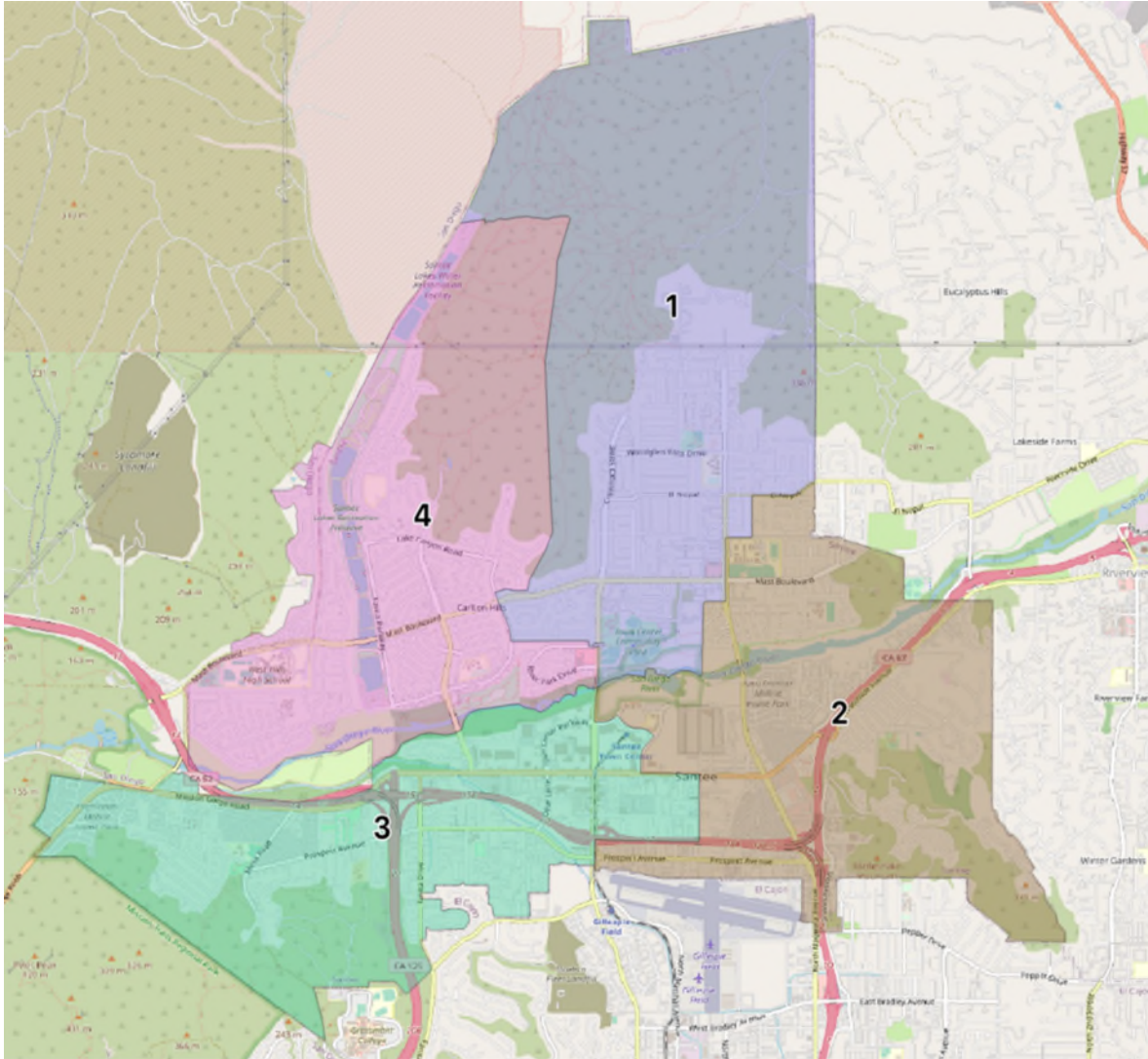


Map Option 2 (previously B)



District	Total Population	Raw Deviation	% Deviation	NL* White Alone	Latino	CVAP**19 Total	CVAP19 NL White	CVAP19 NL Black	CVAP Hispanic	CVAP19 Not Hispanic	CVAP19 NL AIAN***	CVAP19 NL ASIAN	CVAP19 NL Hawaiian	CVAP19 NL Other
1	15,006	(35)	-0.23%	10,022	2,754	10,692	8,006	313	1,458	9,296	35	450	44	127
2	15,167	127	0.84%	8,992	3,786	11,925	8,387	440	1,817	10,050	126	802	49	66
3	15,360	320	2.12%	9,245	3,301	10,954	7,961	205	1,689	9,270	97	569	28	69
4	14,629	(412)	-2.74%	9,583	2,706	10,455	7,842	109	1,420	9,015	37	587	3	100
Total	60,162													
Ideal	15,041													
Deviation	4.86%													
*NL =	Non-Latino													
**CVAP =	Citizen Voting Age Population													
***AIAN=	American Indian Alaskan Native													