



City of Santee Redistricting 2021/2022 Fourth Public Hearing



www.bbklaw.com
© 2021 BEST & KRIEGER LLP

Santee

2021/22 Redistricting Process

AGENDA

- 01 Project timelines
- 02 Review Draft Maps
- 03 Next steps and hearings



BEST BEST & KRIEGER
ATTORNEYS AT LAW

San Marcos Council Terms



Council Members hold 4-year terms

- Transitioned to Districts in 2018
- Districts 1 and 2 terms elected in November 2022
- Districts 3 and 4 terms elected in November 2024



Redistricting Process

STEPS	DESCRIPTION
1. Public Hearing No. 3	Review draft map(s) Discuss and revise, or approve the draft map(s)
2. Initial deadline for draft maps	Deadline for the public to submit draft maps for inclusion in the next hearing packet and presentation
3. Public Hearing No. 4	Continued review of draft map(s) Discuss and revise, or approve the draft map(s)
4. Additional Public Hearings	<ul style="list-style-type: none">• Map adopted via ordinance or resolution• Final map must be posted at least 7 days prior to adoption



BEST BEST & KRIEGER
ATTORNEYS AT LAW

Redistricting Rules & Goals

Federal Law

- Equal Population
- Federal Voting Rights Act
- No Racial Gerrymandering

California Criteria for Cities

- Geographically contiguous
- Geographic Integrity of a local neighborhood
- Communities of Interest
- Easily identifiable/use of local landmarks/boundary lines
- Geographically compact

Other Traditional Principles

- Minimize voters shifted to different election years
- Respect voters' choices / continuity in office
- Future population growth
- Preserving the core of existing districts



BEST BEST & KRIEGER
ATTORNEYS AT LAW

Existing District Boundaries with 2020 Census Data

District	Total Pop	Raw Deviation	% Deviation	Latino	CVAP Total	CVAP NL White	CVAP NL Black	CVAP Hispanic	CVAP Not Hispanic	CVAP NL AIAN	CVAP NL ASIAN	CVAP NL Hawaiian	CVAP NL Other
1	14,520	-520.5	-3.46%	2,701	10,273	7,660	311	1431	8,890	31	430	44	127
2	15,650	609.5	4.05%	3,748	12,346	8,781	440	1792	10,519	122	822	49	75
3	15,363	322.5	2.14%	3,392	10,952	7,913	207	1741	9,207	105	569	28	60
4	14,629	-411.5	-2.74%	2,706	10,455	7,842	109	1420	9,015	37	587	3	100

Total Population: 60,162 • **Ideal Population:** 15,040.5 **Total Deviation:** 7.51%

Findings

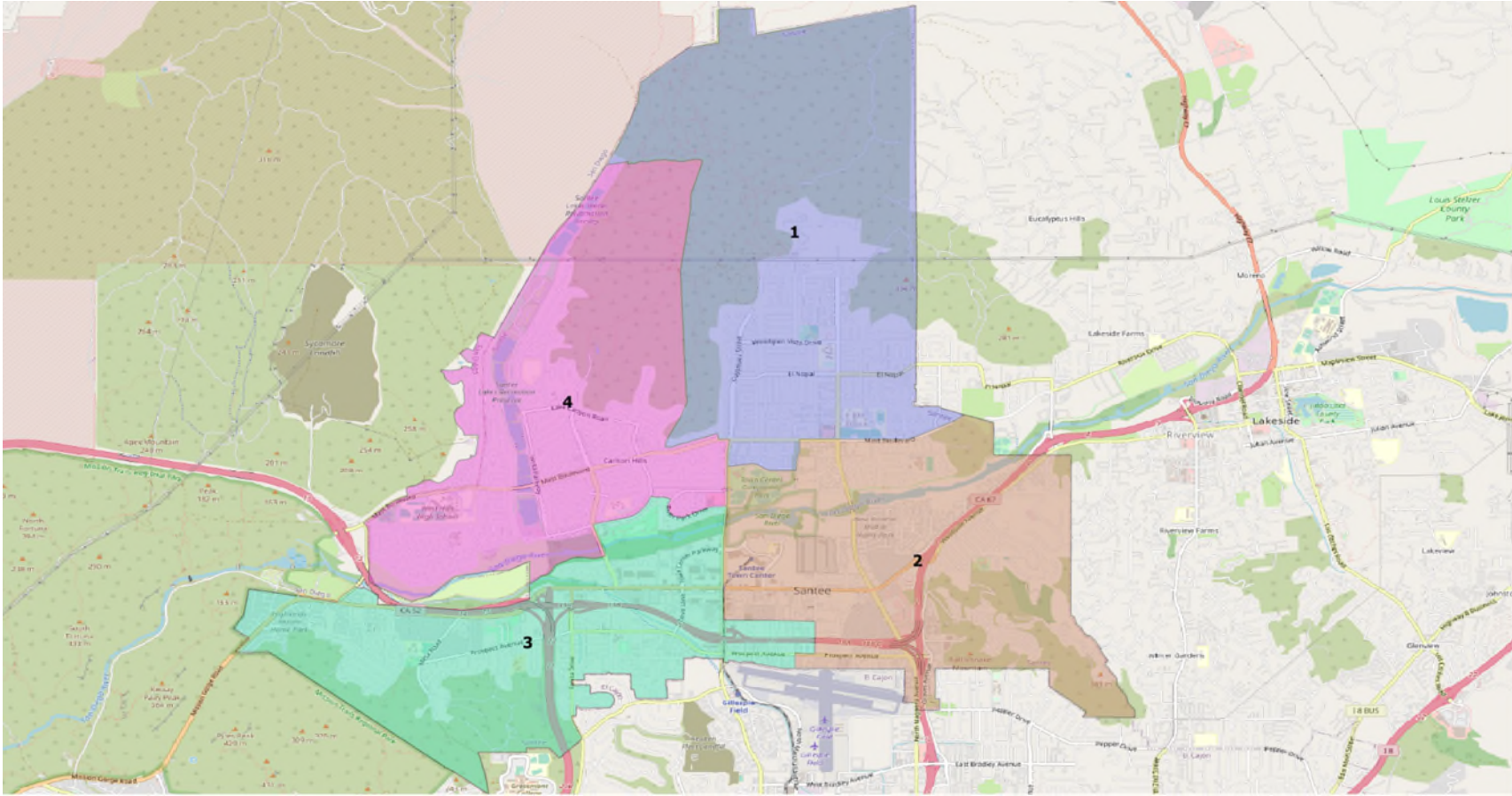
- Total Deviation is below the 10% “acceptable” range at 7.51%
- Creating a majority/minority district may not be possible, given the number of minority residents/voters and the dispersed nature of their residences
- Current district boundaries *may* be adjusted for population balance



Draft Maps

- Direction from Council was a simple population rebalance
- One draft map prepared by BB&K
- One draft map received from a member of the Public

Map Option 2 (formerly B)



Option 2 with 2020 Census Data

District	Total Pop	Raw Deviation	% Deviation	Latino	CVAP Total	CVAP NL White	CVAP NL Black	CVAP Hispanic	CVAP Not Hispanic	CVAP NL AIAN	CVAP NL ASIAN	CVAP NL Hawaiian	CVAP NL Other
1	15,006	(35)	-0.23%	2,754	10,692	8,006	313	1,458	9,296	35	450	44	127
2	15,167	127	0.84%	3,786	11,925	8,387	440	1,817	10,050	126	802	49	66
3	15,360	320	2.12%	3,301	10,954	7,961	205	1,689	9,270	97	569	28	69
4	14,629	(412)	-2.74%	2,706	10,455	7,842	109	1,420	9,015	37	587	3	100

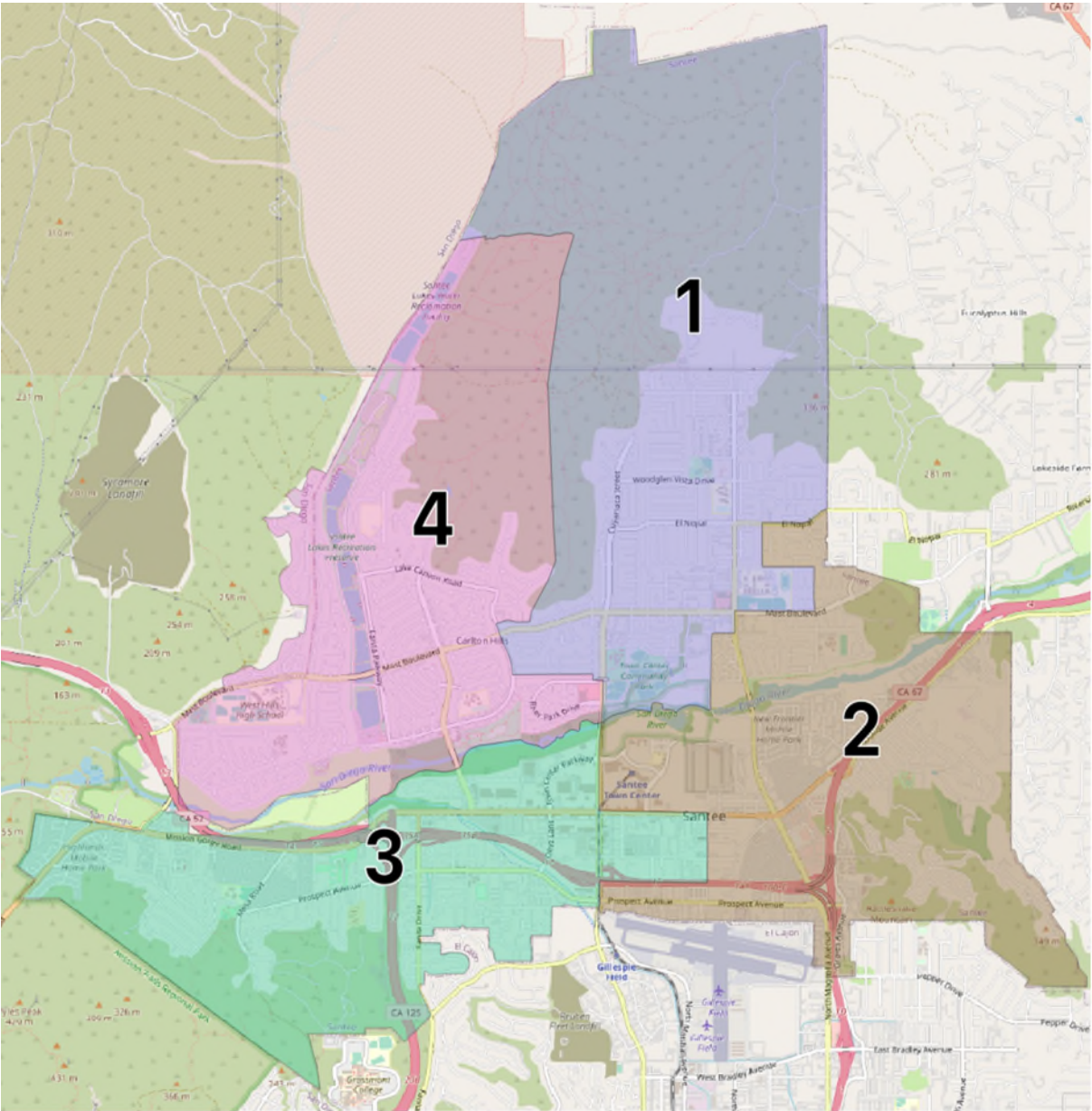
Total Population: 60,162 • **Ideal Population:** 15,040.5 **Total Deviation:** 4.86%

Findings – Option 2

- Total Deviation is below the “acceptable” range at 4.86%
- The map creates compact voting districts
- Map attempts to use major streets and natural boundaries to divide Districts
- Resembles the current boundary map, particularly with regard to the shape of the districts and the “four corners” area in the center of town
- Does not create a majority/minority voting district

New Map Options

Map Option 3



Option 3 with 2020 Census Data

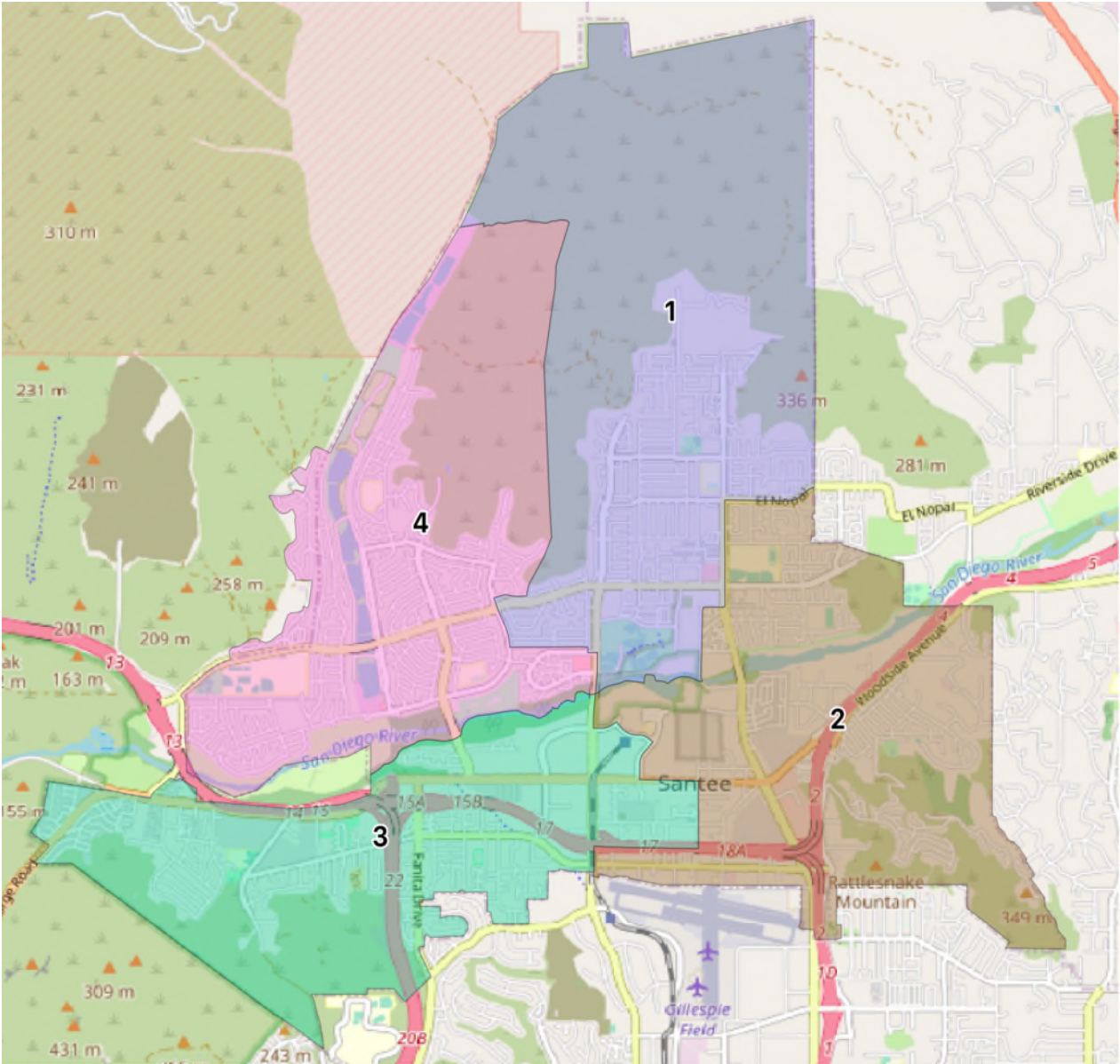
District	Total Pop	Raw Deviation	% Deviation	Latino	CVAP Total	CVAP NL White	CVAP NL Black	CVAP Hispanic	CVAP Not Hispanic	CVAP NL AIAN	CVAP NL ASIAN	CVAP NL Hawaiian	CVAP NL Other
1	15,309	268.50	1.79%	2,805	10,223	10,907	8,171	315	1,492	9,478	35	455	44
2	14,883	-157.50	-1.05%	3,735	8,798	11,730	8,231	444	1,783	9,890	126	800	49
3	15,341	300.50	2.00%	3,301	9,238	10,934	7,952	199	1,689	9,248	97	566	28
4	14,629	-411.50	-2.74%	2,706	9,583	10,455	7,842	109	1,420	9,015	37	587	3

Total Population: 60,162 • **Ideal Population:** 15,040.5 **Total Deviation:** 4.74%

Findings – Option 3

- Total Deviation is below the “acceptable” range at 4.73%
- The map creates compact voting districts
- Puts Santana High School in District 1
- Moves shopping center at Mission Gorge and Cuyamaca Street wholly in District 3
- Does not create a majority/minority voting district

Map Option 2v2



Option 2v2 with 2020 Census Data

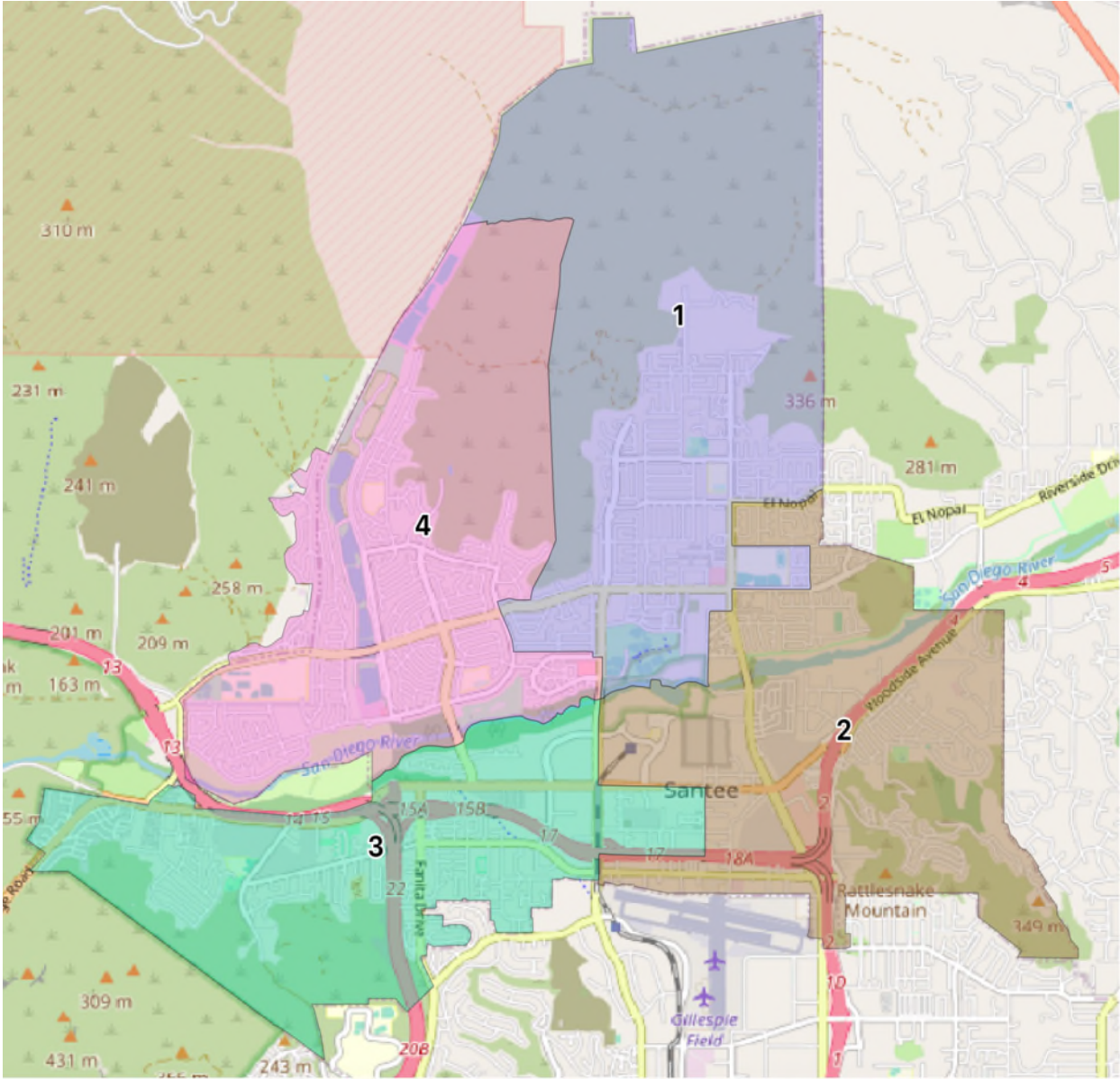
District	Total Pop	Raw Deviation	% Deviation	Latino	CVAP Total	CVAP NL White	CVAP NL Black	CVAP Hispanic	CVAP Not Hispanic	CVAP NL AIAN	CVAP NL ASIAN	CVAP NL Hawaiian	CVAP NL Other
1	14,709	331.50	-2.20%	2,720	10,428	7,793	311	1,444	9,042	35	439	44	127
2	15,464	423.50	2.82%	3,820	12,189	8,600	442	1,831	10,304	126	813	49	66
3	15,360	319.50	2.12%	3,301	10,954	7,961	205	1,689	9,270	97	569	28	69
4	14,629	411.50	-2.74%	2,706	10,455	7,842	109	1,420	9,015	37	587	3	100

Total Population: 60,162 • **Ideal Population:** 15,045.5 **Total Deviation:** 5.55%

Findings – Option 2v2

- Total Deviation is below the “acceptable” range at 5.55%
- The map creates compact voting districts
- Does not create a majority/minority voting district
- Moves Santana High School and the Commercial Center at Mission Gorge and Cuyamaca Street
- Moves a small population north of Santana High School from District 1 to District 2 to create a more compact split

Map Option 3v2



Option 3v2 with 2020 Census Data

District	Total Pop	Raw Deviation	% Deviation	Latino	CVAP Total	CVAP NL White	CVAP NL Black	CVAP Hispanic	CVAP Not Hispanic	CVAP NL AIAN	CVAP NL ASIAN	CVAP NL Hawaiian	CVAP NL Other
1	15,012	-28.50	-0.19%	2,771	10,643	7,958	313	1,478	9,224	35	444	44	127
2	15,180	139.50	0.93%	3,769	11,994	8,444	446	1,797	10,144	126	811	49	66
3	15,341	300.50	2.00%	3,301	10,934	7,952	199	1,689	9,248	97	566	28	69
4	14,629	411.50	-2.74%	2,706	10,455	7,842	109	1,420	9,015	37	587	3	100

Total Population: 60,162 • **Ideal Population:** 15,045.5 **Total Deviation:** 4.74%

Findings – Option 3v2

- Total Deviation is below the “acceptable” range at 4.73%
- The map creates compact voting districts
- Does not create a majority/minority voting district
- Moves Santana High School and the Commercial Center at Mission Gorge and Cuyamaca Street
- Moves a small population north of Santana High School from District 1 to District 2 to create a more compact split

Public Hearing and Discussion

1. Review of Draft Maps
2. Provide input and/or request for revisions
3. May select a preferred map



Timeline & Next Steps

October 13, 2021	1 st public hearing Held prior to the release of draft maps
November 10, 2021	2 nd public hearing Held prior to the release of draft maps
Fall/Winter 2021/22	BB&K to prepare draft maps using 2020 census data
January 26, 2022	3 rd public hearing Consideration and input on proposed draft maps
February 9, 2022	4 th public hearing Council may select preferred map
April 17, 2022	City deadline to adopt ordinance after 2 nd reading (effective immediately) and to submit map to Registrar.
November 2022	2022 election



BEST BEST & KRIEGER
ATTORNEYS AT LAW