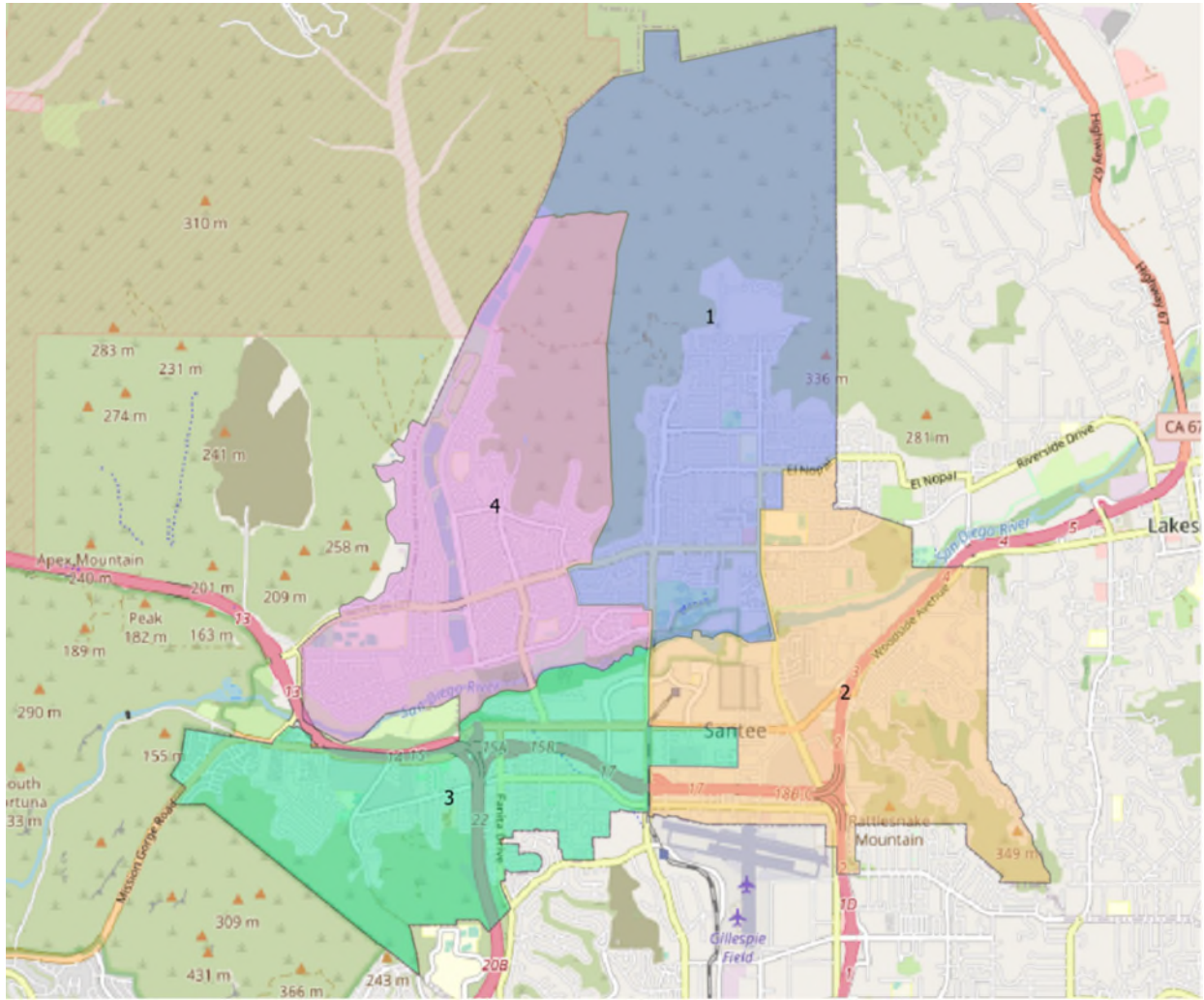


Map Option 4



District	Total Population	Raw Population	% Population	Latino	CVAP*19 Total	CVAP19 NL** White	CVAP19 NL Black	CVAP Hispanic	CVAP19 Not Hispanic	CVAP19 NL AIAN***	CVAP19 NL ASIAN	CVAP19 NL Hawaiian	CVAP19 NL Other
1	15,513	473	3.14%	2,834	11,081	8,351	317	1,501	9,664	43	455	48	133
2	14,931	-110	-0.73%	3,764	11,744	8,185	443	1,811	9,858	118	797	45	72
3	15,033	-8	-0.05%	3,233	10,701	7,791	198	1,645	9,057	97	562	28	57
4	14,685	-356	-2.36%	2,716	10,500	7,869	109	1,427	9,052	37	594	3	100
Total	60,162												
Ideal	15,041	Deviation	5.51%										
*CVAP =	Citizen Voting Age Population												
**NL =	Non Latino												
***AIAN =	American Indian Alaskan Native												