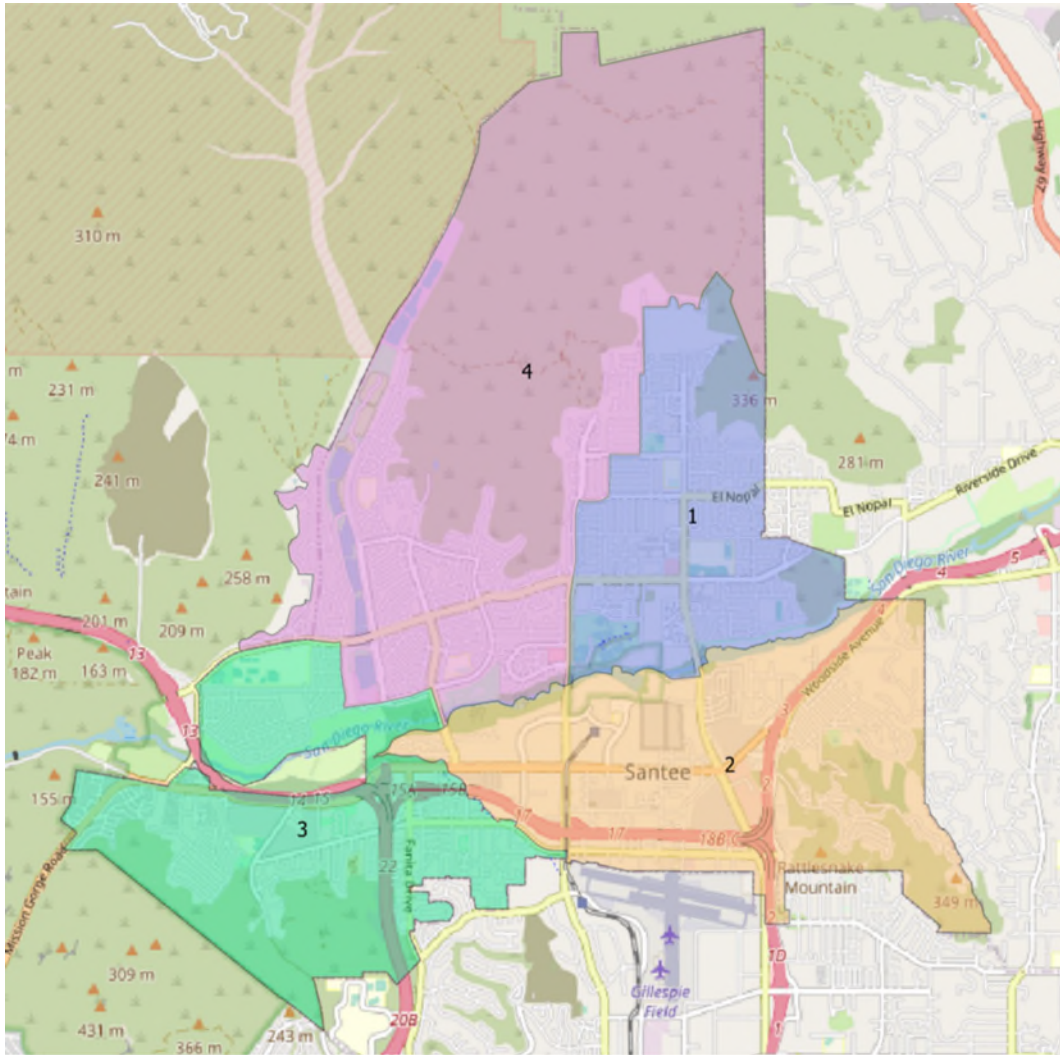


Map Option 5



District	Total Population	Raw Population	% Population	Latino	CVAP*19 Total	CVAP19 NL** White	CVAP19 NL Black	CVAP Hispanic	CVAP19 Not Hispanic	CVAP19 NL AIAN***	CVAP19 NL ASIAN	CVAP19 NL Hawaiian	CVAP19 NL Other
1	15,919	879	5.84%	2,930	11,615	8,833	302	1,520	10,182	43	474	31	103
2	14,365	-676	-4.49%	3,984	11,150	7,352	504	1,945	9,136	143	749	73	95
3	15,064	24	0.16%	2,953	10,644	8,093	134	1,460	9,159	85	561	-	40
4	14,814	-227	-1.51%	2,680	10,617	7,918	127	1,459	9,154	24	624	20	124
Total	60,162												
Ideal	15,041	Deviation	10.33%										
*CVAP =	Citizen Voting Age Population												
**NL =	Non Latino												
***AIAN =	American Indian Alaskan Native												